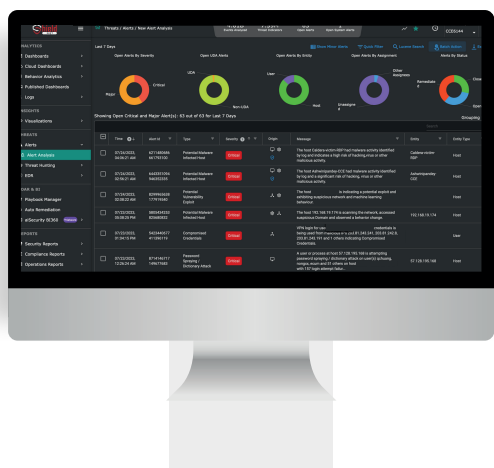




# aiSecurity Score360 & BI360

**Advanced capabilities designed to quantify and report on risks and the value of the cybersecurity program for clients, partners and auditors.**

Shield 24x7's comprehensive platform empowers efficient, high-margin security services and streamlines operations with AI and ML-powered detections and automated responses to remediate attacks and breaches



## Score360 and BI360 Overview

**Shield 24x7 aiSecurity Score360** service provides comprehensive scanning and risk assessments of attack surfaces. It quantifies, prioritizes and benchmarks environments. The platform's external scans include intelligence from the CVE, NVT, OVAL, and CPE databases. The modular dashboard includes charts and tables and "drill down" capabilities, making values in the dashboard meaningful and actionable.

**Shield 24x7 aiSecurity BI360** enables partners to select from pre-set compliance and regulatory frameworks, including CMMC, HIPAA, PCI-DSS, NIST, GDPR and perform their own analytics and reporting. Analysts can combine both real-time and historical views of events and use that knowledge for better planning and predicting future attacks. Functionality includes the flexibility to customize reports, notate them, and brand them



## Highlights



### GAIN TRUST WITH UNIFIED VISIBILITY AND THREAT INTELLIGENCE CAPABILITIES

Uncover a myriad of threat vectors lurking outside and inside your existing networks, endpoints, logs, auto-discovered hosts, network, cloud, OT and IoT infrastructure. Shield 24x7's aiSecurity Score360 provides comprehensive assessments of internal and external attack surfaces.



### CONTINUOUS RISK & POSTURE REPORTING

Leverage pre-set report templates for popular compliance regulations and frameworks including: NSIT, CMMC, PCI-DSS, HIPAA. Create organizational policies and governance reporting and report on issues or drift.



### CUSTOMIZABLE DASHBOARDS & REPORTS

Dashboards are designed for "at-a-glance" visibility and the ability to "drill-down" to the details. Reports can be branded, scheduled, downloaded. Both feature drag-and-drop creation and customization.



### CONTINUOUS COMPLIANCE

Ensure compliance 24x7 with Shield 24x7's audit and reporting capabilities for PCI-DSS, HIPAA, NIST, GDPR and more. Additionally monitor security postures, operations and investigations reporting.



## Shield 24x7 Platform Overview



**Ingestion of events, logs, flows, user activity data** from almost all sources; identities, networks, endpoints, clouds, and applications.



**Contextual enrichment** with threat intelligence (40+ sources) combines with vulnerability assessments and historical data.



**Behavior baselining and profiling** for anomaly detection leveraging Machine Learning and Artificial Intelligence techniques.



**Advanced event correlation** (on-prem and cloud) and behavioral patterns with AI and Dynamic Threat Models.



**Identification of threats** based on rules-based policy creation, enforcement and notification for appropriate action and governance



**Protection and response** based on automated remediation (based on incident triaging and or prebuilt playbooks) and real-time remediation.



**Continuous compliance and reporting** across several key areas – security, compliance, operations and investigations.



**Shield 24x7 has transformed our cybersecurity. Its real-time threat detection, automated response, and AI-driven insights are top-notch. Easy to implement and use, it covers all endpoints, networks, and cloud environments. The customer support is outstanding. Highly recommend for robust and reliable protection!**



## Shield 24x7 aiSecurity Score360

Automatically pulls in and scans external sources of threat intelligence including:

- Dark Web Monitoring
- CVE Based Vulnerabilities
- Application Misconfiguration
- DNS Masquerade Alerts
- Malicious Assets
- Internal Network Security Posture



## Shield 24x7 aiSecurity BI360

Included preset reports that track compliance and framework audit report requirements include eg:

- NIST
- CMMC
- PCI-DSS
- GDPR
- HIPAA
- Other (support your own custom reports, audit report needs)



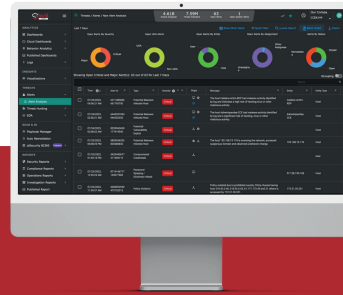
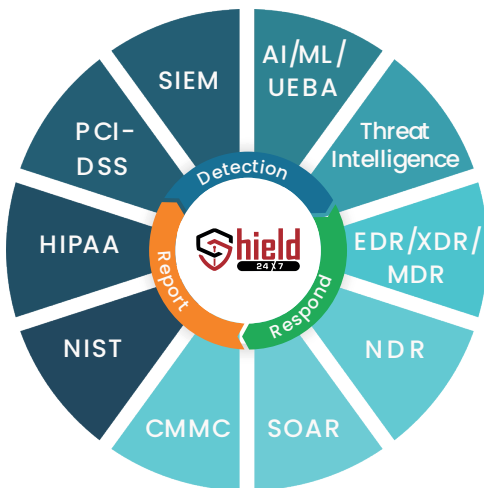
*Shield 24x7 aiSecurity Score360 Dashboard*

*Shield 24x7 aiSecurity BI360 Report List*



## About Shield 24x7

Shield 24x7 reduces cyber threat risks and security stack complexity while significantly improving the ability to detect and block threats and breaches at scale. Shield 24x7's Open Threat Management (OTM) platform enhances and automates security with our AI and ML-powered aiSIEM and aiXDR solutions. The platform provides comprehensive coverage by collecting telemetry from logs, identity management systems, networks, endpoints, clouds, and applications. This data is enriched and analyzed in real-time using threat intelligence, AI & ML models based on behavioral analysis, and correlation engines to generate reliable and transparent detections and alerts. Shield 24x7 supports over 8,000 clients by delivering high-margin, efficient security services with automated cyber threat remediation and continuous compliance.



### PRESENT MONTHLY KPIs & RISK SCORES

Benchmark and report on cybersecurity service effectiveness to clients with a standard risk score. Track, report and educate variations to risk scores.



### EASIER COMPLIANCE & AUDIT REPORTING

Provide consistent reporting for specific controls that compliance, regulatory and security frameworks. Customize the report by time, location or device or governed posture.



### FLEXIBLE LICENSING FOR MSPs AND MSSPs

Harness the power of flexible 'best-fit' cost and licensing through on-premises, cloud or MSP hosted solution spanning multiple sites – data center and branch offices – with multi-tenancy and data segregation at the core of platform architecture

## Learn more about Shield 24x7 aiXDR and



**Schedule a Demo**

[www.Shield24x7.com/contact-us/](http://www.Shield24x7.com/contact-us/)

